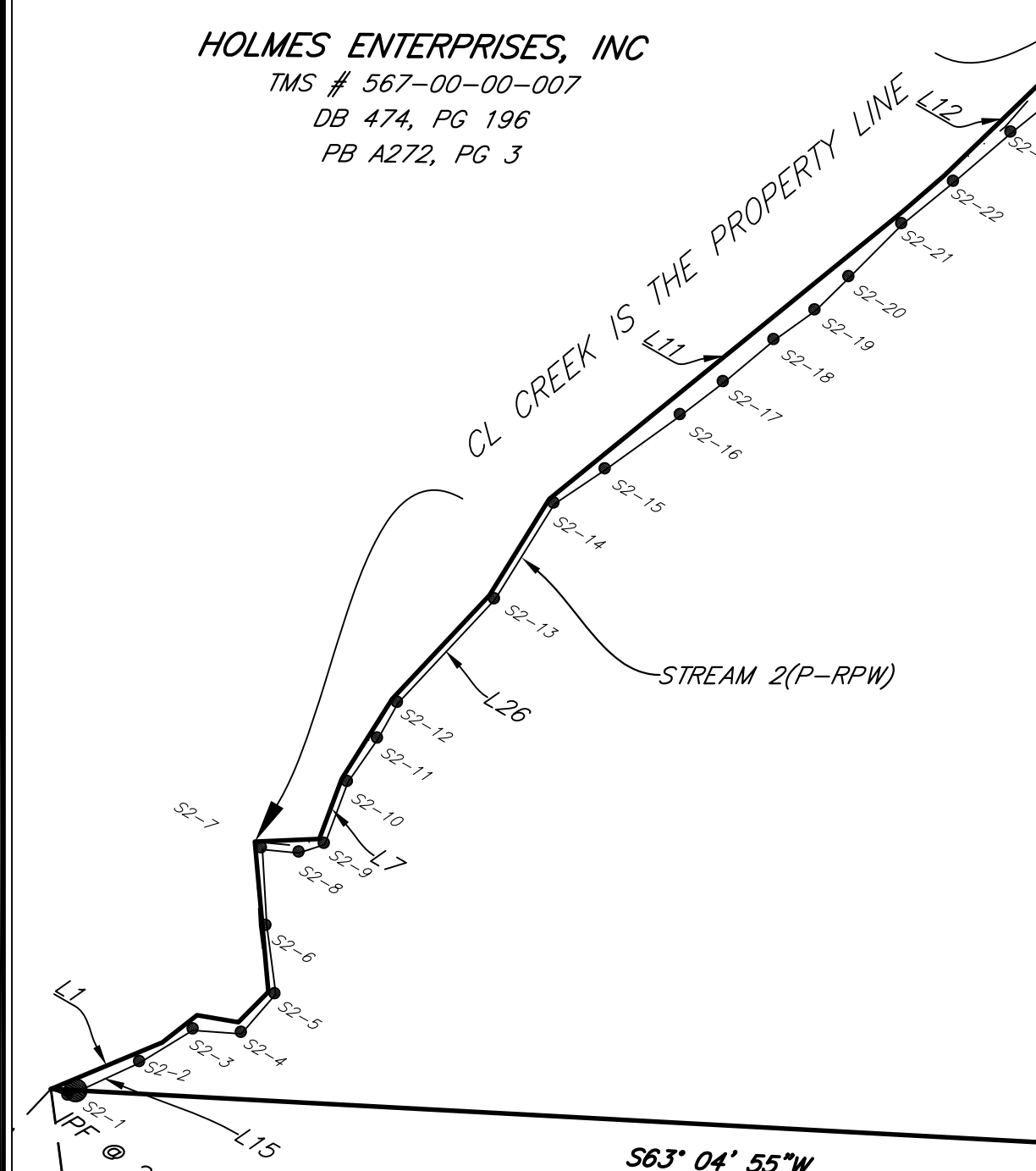


CREEK AS PROP. LINE		
LINE #	BEARING	DISTANCE
L1	S37° 20' 14"W	111.42'
L2	S21° 50' 10"W	40.76'
L3	S69° 41' 08"W	38.63'
L4	S14° 49' 05"W	39.48'
L5	S35° 10' 16"E	139.18'
L6	S57° 32' 36"W	59.59'
L7	S9° 32' 38"E	59.17'
L8	S2° 18' 08"W	87.15'
L9	S13° 09' 38"W	131.08'
L10	S1° 51' 22"W	104.61'
L11	S20° 53' 45"W	418.77'
L12	S16° 00' 26"W	151.68'
L13	S24° 32' 42"W	165.83'
L14	N14° 39' 32"E	25.75'
L122	N68° 07' 19"E	25.24'

STREAM S-2; 15-43		
LINE #	BEARING	DISTANCE
L15	N35° 09' 36"E	72.62'
L16	N28° 37' 10"E	57.86'
L17	N64° 01' 58"E	44.62'
L18	N11° 02' 51"E	47.21'
L19	N37° 31' 27"W	63.59'
L20	N33° 18' 35"W	71.72'
L21	N65° 39' 24"E	35.17'
L22	N41° 48' 49"E	24.27'
L23	N9° 32' 38"W	60.95'
L24	N4° 44' 32"E	48.73'
L25	N0° 50' 25"W	37.77'
L26	N13° 09' 38"E	130.96'
L27	N1° 51' 22"E	104.04'
L28	N26° 05' 10"E	57.22'
L29	N24° 19' 00"E	85.08'
L30	N22° 32' 17"E	50.01'
L31	N20° 08' 23"E	61.19'
L32	N24° 22' 13"E	46.28'
L33	N15° 33' 02"E	43.88'
L34	N14° 57' 09"E	69.05'

STREAM S-2; 15-43		
LINE #	BEARING	DISTANCE
L35	N20° 42' 40"E	61.71'
L36	N19° 25' 03"E	69.80'
L37	N20° 59' 39"E	143.78'
L38	N24° 42' 06"E	64.76'
L39	N14° 39' 32"E	25.75'
L40	N68° 07' 19"E	25.24'
L41	N10° 57' 51"E	44.91'
L42	N25° 02' 21"E	64.65'
L43	N10° 00' 23"E	46.01'

STREAM S-4		
LINE #	BEARING	DISTANCE
L84	S51° 31' 59"E	8.70'
L85	N15° 15' 55"E	45.07'



WETLANDS A		
LINE #	BEARING	DISTANCE
L110	N15° 31' 03"E	31.15'
L111	N52° 59' 07"E	60.57'
L112	N37° 13' 33"E	72.42'
L113	N10° 18' 15"E	56.08'
L114	N63° 19' 30"E	58.94'
L115	S52° 48' 14"E	43.50'
L116	S39° 46' 05"W	58.70'
L117	S49° 24' 52"W	68.09'
L118	S46° 28' 17"W	78.36'
L119	S32° 23' 04"W	35.19'
L120	S60° 27' 11"W	20.49'
L121	N76° 07' 08"W	15.56'

WETLANDS B		
LINE #	BEARING	DISTANCE
L102	N18° 14' 09"W	7.67'
L103	N51° 54' 23"E	34.86'
L104	N57° 09' 15"E	44.27'
L105	N58° 04' 26"E	37.55'
L106	S75° 51' 47"E	17.11'
L107	S61° 23' 48"W	46.75'
L108	S63° 47' 36"W	44.91'
L109	S48° 10' 41"W	39.40'

WETLANDS C		
LINE #	BEARING	DISTANCE
L97	N20° 04' 42"W	8.44'
L98	N66° 04' 51"E	42.34'
L99	S28° 13' 50"E	10.40'
L101	S68° 37' 49"W	43.73'

WETLANDS D		
LINE #	BEARING	DISTANCE
L86	N5° 11' 23"E	15.33'
L87	N63° 58' 59"E	35.11'
L88	N62° 48' 52"E	47.03'
L89	N49° 38' 36"E	30.52'
L90	N47° 25' 33"E	50.69'
L91	N51° 36' 24"E	31.97'
L92	S22° 53' 36"W	63.16'
L93	S33° 41' 51"W	35.76'
L94	S85° 56' 48"W	48.93'
L95	S51° 27' 30"W	53.53'
L96	S86° 29' 38"W	25.37'

WATERS OF THE U.S. WETLANDS A = 0.213 ACRES, 9,298.379 SQ. FT.  
 WATERS OF THE U.S. WETLANDS B = 0.022 ACRES, 978.901 SQ. FT.  
 WATERS OF THE U.S. WETLANDS C = 0.009 ACRES, 403.959 SQ. FT.  
 WATERS OF THE U.S. WETLANDS D = 0.096 ACRES, 4166.82 SQ. FT.  
 WATERS OF THE U.S. STREAM 1 = 0.095 ACRES, 2774.022 LINEAR FEET  
 WATERS OF THE U.S. STREAM 2 = 0.405 ACRES, 3547.231 LINEAR FEET  
 WATERS OF THE U.S. STREAM 3 = 0.074 ACRES, 2107.514 LINEAR FEET  
 WATERS OF THE U.S. STREAM 4 = 0.004 ACRES, 113.530 LINEAR FEET

TOTAL PROJECT AREA = 108.431 ACRES  
 4,723,262.957 SQ. FT.  
 TOTAL PROJECT PERIMETER = 9742.593 LINEAR FEET

STREAMS = 0.578 ACRES, 8542.297 LINEAR FEET  
 WETLANDS = 0.292 ACRES, 14,848.059 SQ. FT.

TOTAL WATERS OF THE U.S. = 0.870 ACRES  
 37,810.23 SQ. FT.

WETLANDS A		
LINE #	BEARING	DISTANCE
L110	N15° 31' 03"E	31.15'
L111	N52° 59' 07"E	60.57'
L112	N37° 13' 33"E	72.42'
L113	N10° 18' 15"E	56.08'
L114	N63° 19' 30"E	58.94'
L115	S52° 48' 14"E	43.50'
L116	S39° 46' 05"W	58.70'
L117	S49° 24' 52"W	68.09'
L118	S46° 28' 17"W	78.36'
L119	S32° 23' 04"W	35.19'
L120	S60° 27' 11"W	20.49'
L121	N76° 07' 08"W	15.56'

WETLANDS B		
LINE #	BEARING	DISTANCE
L102	N18° 14' 09"W	7.67'
L103	N51° 54' 23"E	34.86'
L104	N57° 09' 15"E	44.27'
L105	N58° 04' 26"E	37.55'
L106	S75° 51' 47"E	17.11'
L107	S61° 23' 48"W	46.75'
L108	S63° 47' 36"W	44.91'
L109	S48° 10' 41"W	39.40'

WETLANDS C		
LINE #	BEARING	DISTANCE
L97	N20° 04' 42"W	8.44'
L98	N66° 04' 51"E	42.34'
L99	S28° 13' 50"E	10.40'
L101	S68° 37' 49"W	43.73'

WETLANDS D		
LINE #	BEARING	DISTANCE
L86	N5° 11' 23"E	15.33'
L87	N63° 58' 59"E	35.11'
L88	N62° 48' 52"E	47.03'
L89	N49° 38' 36"E	30.52'
L90	N47° 25' 33"E	50.69'
L91	N51° 36' 24"E	31.97'
L92	S22° 53' 36"W	63.16'
L93	S33° 41' 51"W	35.76'
L94	S85° 56' 48"W	48.93'
L95	S51° 27' 30"W	53.53'
L96	S86° 29' 38"W	25.37'

**COPYRIGHT NOTICE**  
 THIS DRAWING IS THE PROPERTY OF B.P. BARBER & ASSOCIATES, INC. AND IS NOT TO BE REPRODUCED OR COPIED IN WHOLE OR IN PART. IT IS ONLY TO BE USED FOR THE PROJECT AND SITE SPECIFICALLY IDENTIFIED HEREIN AND IS NOT TO BE USED ON ANY OTHER PROJECT.

**LEGEND**  
 ○ 1/2" PINCH PIPE FOUND  
 ● 1" PINCH PIPE FOUND  
 ○ 3/4" PINCH PIPE FOUND  
 ○ 1/2" REBAR FOUND  
 ○ 1" OPEN TOP FOUND  
 ○ 1/2" REBAR SET  
 ○ PP POWER POLE  
 ○ LP LIGHT POLE  
 ○ OHP POWER LINE

**ORIGIN OF HORIZONTAL DATUM:**  
 NGS MONUMENT - LANFORD  
 PID No. 067828  
 ELEVATION = 838.9 (MVD88)  
 SOUTH CAROLINA STATE PLANE COORDINATES  
 N: 946527.14  
 E: 1728882.05

**NOTES:**  
 1. THIS IS NOT A VALID, TRUE COPY OF THIS DOCUMENT UNLESS IT BEARS THE ORIGINAL SIGNATURE, SIGNATURE DATE, AND THE RAISED, EMBOSSED SEAL OF THE REGISTERED PROFESSIONAL LAND SURVEYOR NOTED HEREON.  
 2. ANYTHING SHOWN OUTSIDE THE DEFINED BOUNDARY OF THIS PLAT IS FOR DESCRIPTIVE PURPOSES ONLY.  
 3. THE EASEMENTS SHOWN HEREON ARE ALL THOSE OF WHICH THE SURVEYOR WAS AWARE AS OF THE DATE OF THIS SURVEY. THE LOCATIONS OF THOSE EASEMENTS SHOWN HEREON ARE BASED ON EVIDENCE APPARENT IN THE FIELD AND DOCUMENTS WHICH HAVE BEEN PROVIDED TO US. THERE MAY BE ADDITIONAL EASEMENTS WHICH AFFECT THIS PROPERTY BUT WERE NOT KNOWN TO US.  
 4. THE LOCATION OF ALL UTILITIES SHOWN HEREON ARE APPROXIMATE AND MUST BE VERIFIED BY OPERATING AUTHORITIES PRIOR TO CONSTRUCTION.  
 5. ALL PROPERTY CORNER SIZES ARE MEASURED TO THE OUTSIDE DIMENSION.  
 6. FIELD WORK COMPLETED ON NOVEMBER 12, 2009.  
 7. A 1/2" REBAR WAS FOUND AT A BEARING OF N62°52'21"E AND A DISTANCE OF 3.16 FEET.

**PRELIMINARY - FOR REVIEW ONLY**  
 THURL M. AMICK, S.C.P.L.S. NO. 4032  
 B.P. BARBER & ASSOCIATES, INC.  
 128 MILLPORT CIRCLE, SUITE 100  
 GREENVILLE, SC 29607 TELEPHONE: (864) 672-2000

**THOMASON II INDUSTRIAL SITE**  
 123 CHARLOTTE ROAD  
 CLINTON, SC 12345

**PLAT OF WATERS OF THE U.S.**  
 LAURENS COUNTY, S.C.  
 DATE: DECEMBER 15, 2009 SCALE: 1" = 200'

**BP Barber**  
 Engineering • Experience • Excellence  
 COLUMBIA • GREENVILLE • CHARLESTON  
 FLORENCE • CHARLOTTE • SAVANNAH

**APPROVALS**  
 PROJECT ENG. DESIGNED BY: [Signature]  
 DRAWN BY: [Signature]  
 CHECKED BY: [Signature]  
 APPROVED BY: [Signature]

**REVISION**  
 NO. DESCRIPTION DATE BY

**LOCATION MAP**  
 SCALE: N.T.S.

**LOCATION MAP**  
 SCALE: N.T.S.

N:\Projects\Frank's Survey\TEMP\PLATE Do not Delete or Modify.dwg SURVEY 2006.DWG 2/5/2008 4:23:00 PM EST