



Property/Location

Site Name: L&C Tract J
Community: Richburg
County: Chester

Physical Characteristics

Lease: No
Size: 299 acres/121 hectares
Total Certified Acres:
Subdividable: Yes, by 10 acres
Price Per Acre: \$15,000
Price Range:
Soil Type: Sandy Loam
Elevation Range: 470 to 592 feet

Transportation Access

Interstate(s): I-77: 1 miles/6km; I-20: 46miles/74km
Commercial Airport: Charlotte-Douglas International: 37 miles/60km
Private Airport: Lancaster County: McWhirter Field: 10 miles/16 km
Rail: Lancaster and Chester Railway: 0.58 miles/0.93 km
Container Port: Charleston: 166 miles/266 km



Community Information

Subject Property Inside City Limits: No
School District: Chester
Tax District: District 1
Community Development Status: Under Developed
Foreign Trade Zone: No
Multicounty Industrial Park: Yes
Related Counties: York
Tax Map ID: 125-0-21
Zoned Industrial: Yes
Zoning or Regulations: ID-2
Current Landuse(s): Industrial
Surrounding Landuse(s): Industrial & Commercial

Adjacent Property Available: No

Water Service Provider: Chester Metro. District
Water Main Diameter: 16 inch/40.6 cm
Distance to Water Line: 0.5 miles/0.8 km
Comments: 300' to lines on SC 901

Sewer Service Provider: Chester Sewer District
Sewer Main Diameter: 8 inch/20.3 cm
Sewer Type (Force or Gravity): Force Main
Distance to Sewer Line: 0.12 miles/0.19 km
Comments: along SC 901

Natural Gas Provider: Chester Co. Natural Gas
Natural Gas Line Diameter: 8 inch/20.3 cm
Natural Gas Proximity: Available
Comments: adjacent N on SC 9

Primary Electricity Provider: Duke Energy
Alt. Energy Provider
Comments:

Telecom Provider: Tru Vista Telecomm.
Fiber Optics Provider: Tru Vista Telecomm.
Cable Provider: Tru Vista Telecomm.

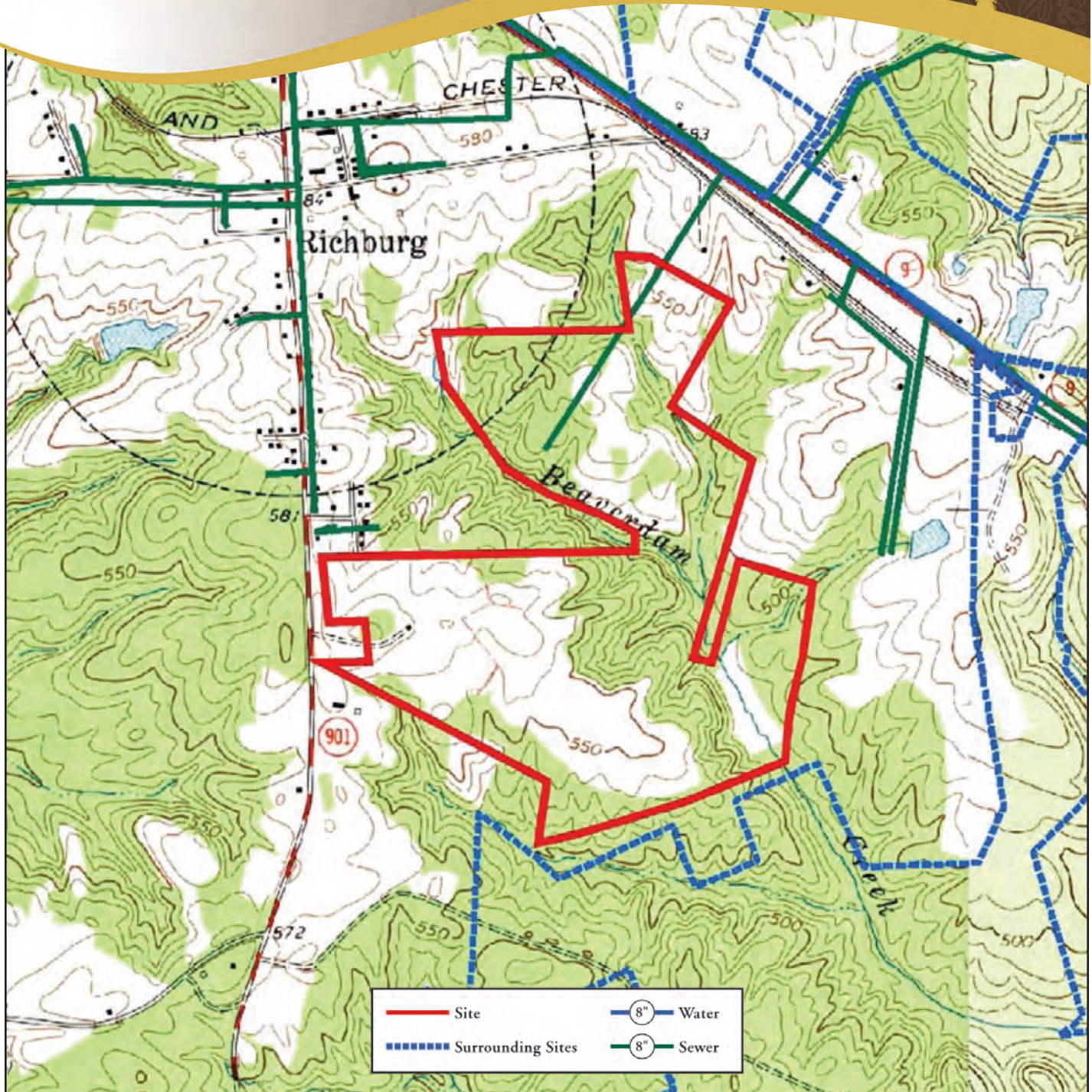
Fire Department: Richburg
Distance to Fire Dept.: 2.2 miles/3.5 km
Fire Dept. ISO Rating: 7

Contact

Chester County Office of Economic Development
525 College Place, Suite A
Chester, SC 29706
803.377.1216
ChooseChester.com

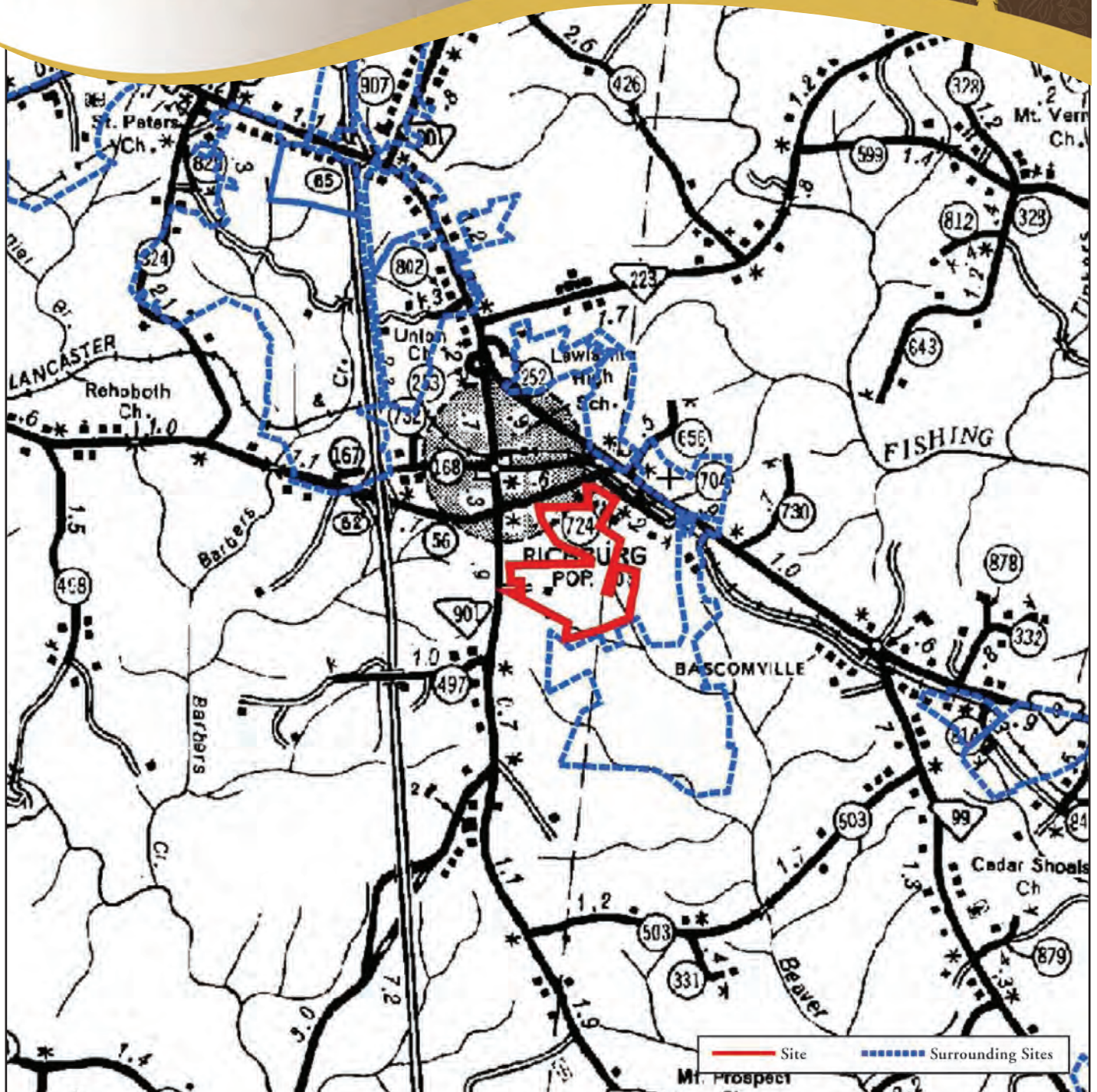
This is a product of the Office of Economic Development for Chester County. The information is derived from various sources and this department does not guarantee its accuracy nor make any representations concerning the suitability of the property for your purpose.





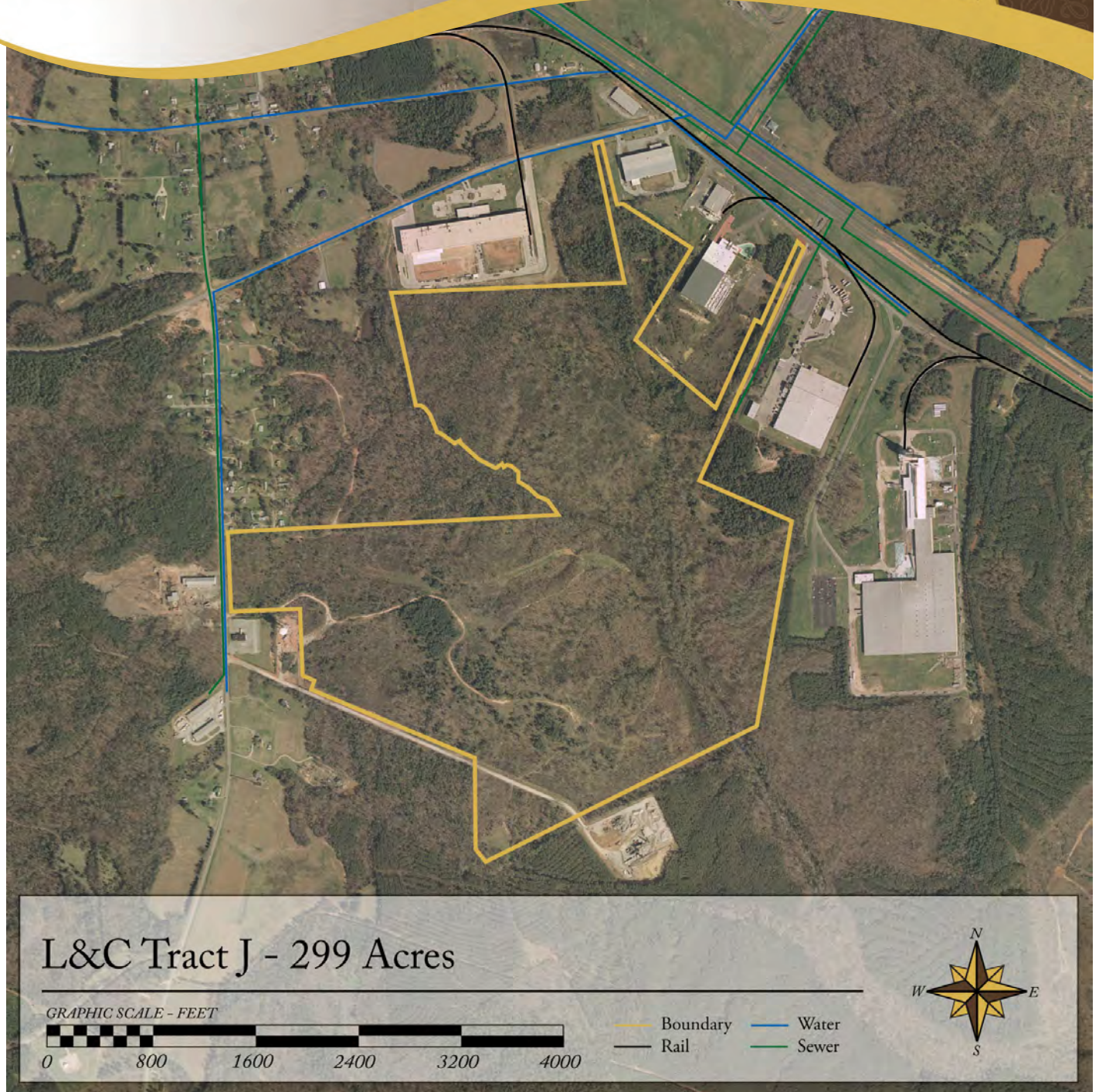
Utilities and Services





Transportation Map and Surrounding Sites





Aerial View

