

EAST YORK INDUSTRIAL PARK

**40,000 SF SPECULATIVE BUILDING
CONSTRUCTION COMPLETE & READY FOR OCCUPANCY!**



- **EAST YORK INDUSTRIAL PARK is ± 465 Acres of “shovel ready” Sites**
- **Available at \$2,000,000**

Just completed $\pm 40,000$ sf building on ± 5.7 acres, with pad expansion up to $\pm 80,000$ sf

- *Additional land available for larger expansion scenarios – up to $\pm 200,000$ sf*
- *Zoned “ID” in York County*
- *Concrete walls; 30’ clear height*
- *Currently, seven (7) existing businesses/industries in the Park*
- *Electricity: Dual feed (York Electric Cooperative)*
- *Water (on-site): 6” and 12” lines (York County)*
- *Sewer (on-site): 8” and 24” lines (York County)*
- *Natural Gas (on-site): (York County Natural Gas)*
- *On-site detention designed*
- *Fiber optic cable throughout the Park.*



For more information, contact:

WES TUTTLE

(803) 366-1158 Ext 222

wes@tuttleco.com * www.tuttleco.com

EAST YORK INDUSTRIAL PARK

40,000 SF SPECULATIVE BUILDING
CONSTRUCTION COMPLETE & READY FOR OCCUPANCY!



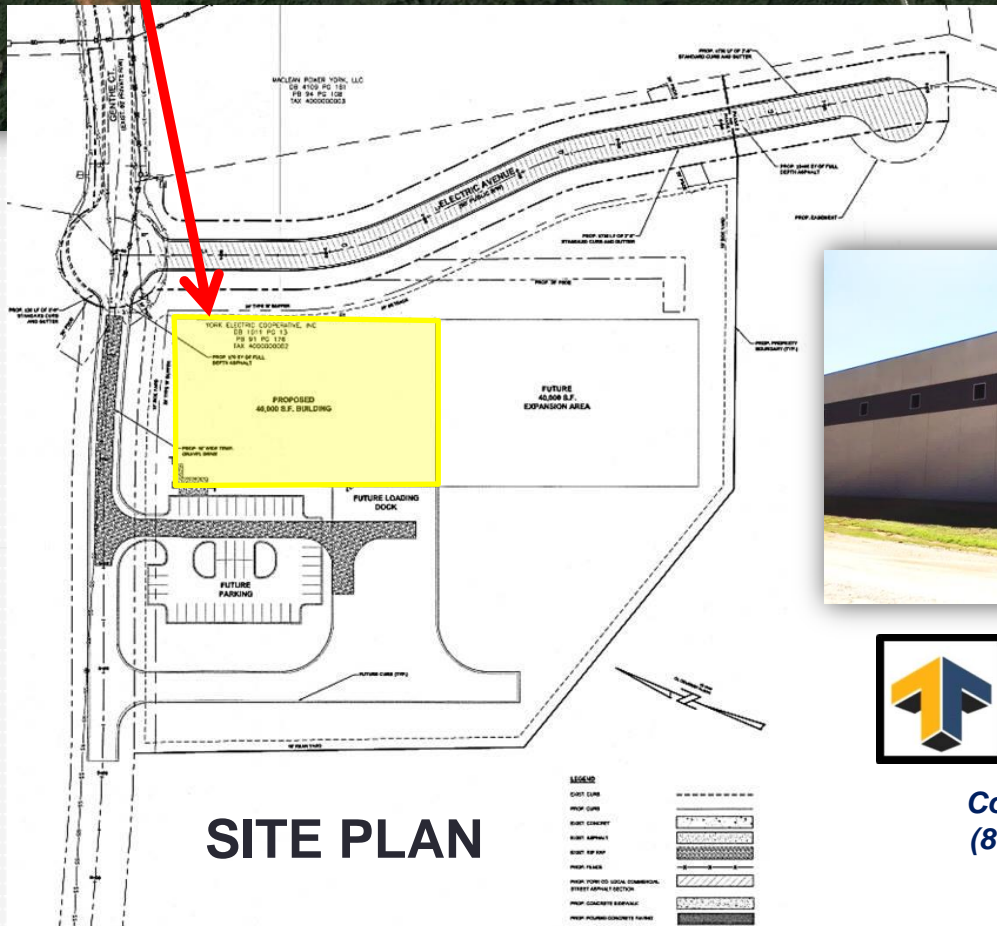
All information provided herein is gathered from sources which are deemed reliable, however, no warranty or guarantee is either expressed or implied.

EAST YORK INDUSTRIAL PARK

**40,000 SF SPECULATIVE BUILDING
CONSTRUCTION COMPLETE & READY FOR OCCUPANCY!**



**±40,000 SF
SPEC BUILDING**



SITE PLAN



Contact: WES TUTTLE
(803) 366-1158 Ext 222
wes@tuttleco.com
www.tuttleco.com

EAST YORK INDUSTRIAL PARK

**40,000 SF SPECULATIVE BUILDING
CONSTRUCTION COMPLETE & READY FOR OCCUPANCY!**



For more information, contact:
WES TUTTLE
(803) 366-1158 Ext 222
wes@tuttleco.com * www.tuttleco.com