

LAND

I-20 and Percival Rd.

Columbia, South Carolina



SALE

- Traffic Count on I-20: 71,400 VPD
- 4,850 Feet of I-20 Frontage
- 159 Acres
- M-1 Industrial and Commercial Zoning
- Water & Sewer Available
- SCE&G Utilities
- Sale Price: \$80,000 - \$120,000 / Acre

George McCutchen
CCIM, SIOR

803.255.8603

gmcutchen@wilsonkibler.com



GRUBB & ELLIS.
Wilson Kibler

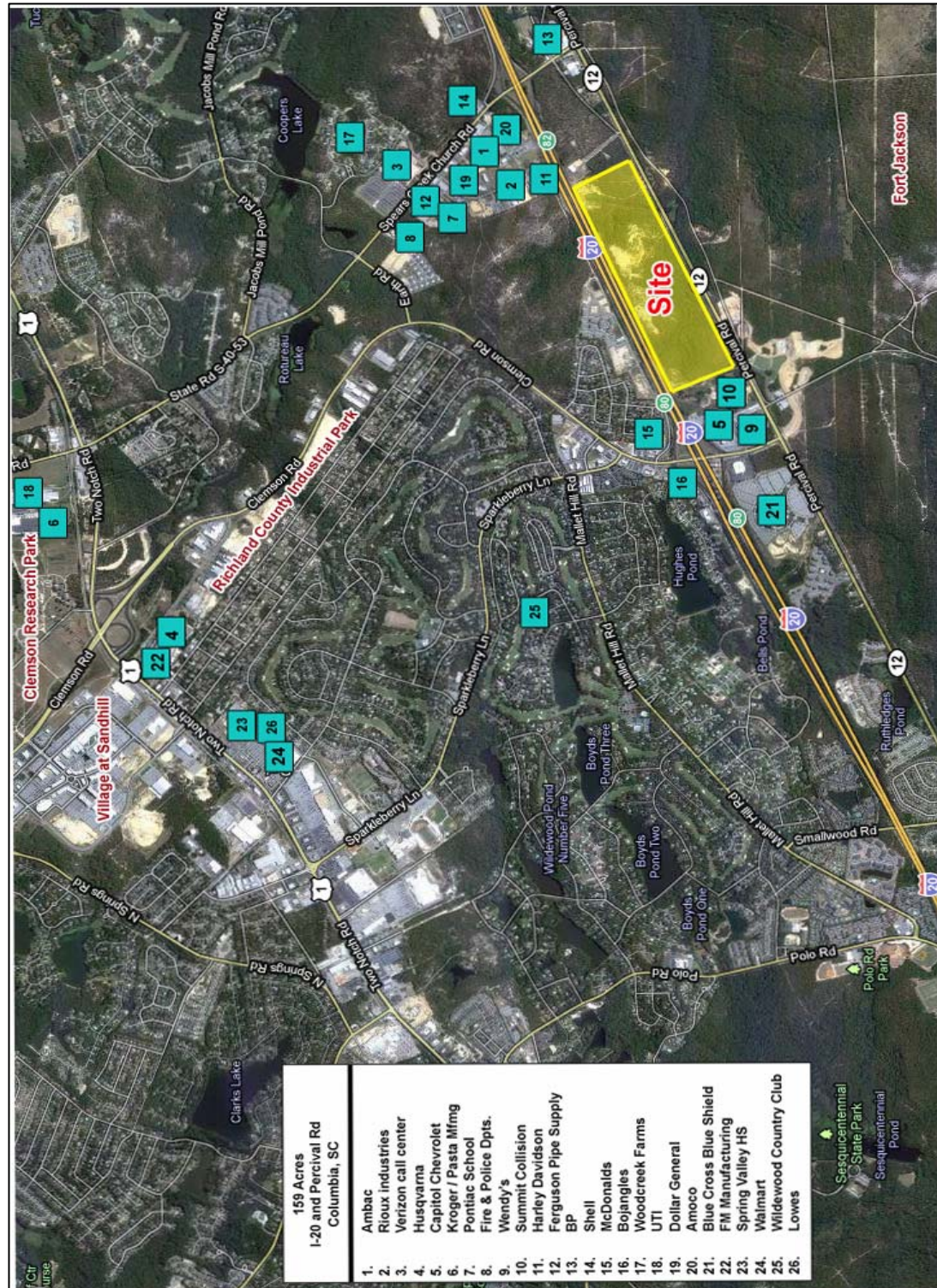
highlights

LAND

I-20 and Percival Rd.

Columbia, South Carolina

SALE



George McCutchen
CCIM, SIOR
803.255.8603
gmccutchen@wilsonkibler.com



1111 Laurel Street
Columbia, SC 29201
803.779.8600 tel
803.252.4323 fax

The information contained herein was obtained from third parties, and it has not been independently verified by the real estate brokers. Buyer/tenants should have the experts of their choice inspect the property and verify all information. Real estate brokers are to qualified to act as or select experts with respect to legal, tax, environment, building construction, soils-drainage or other such matters.