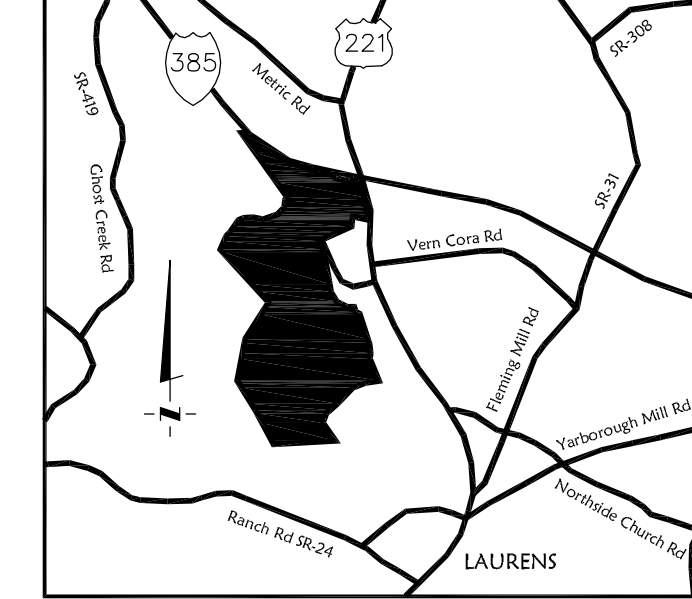
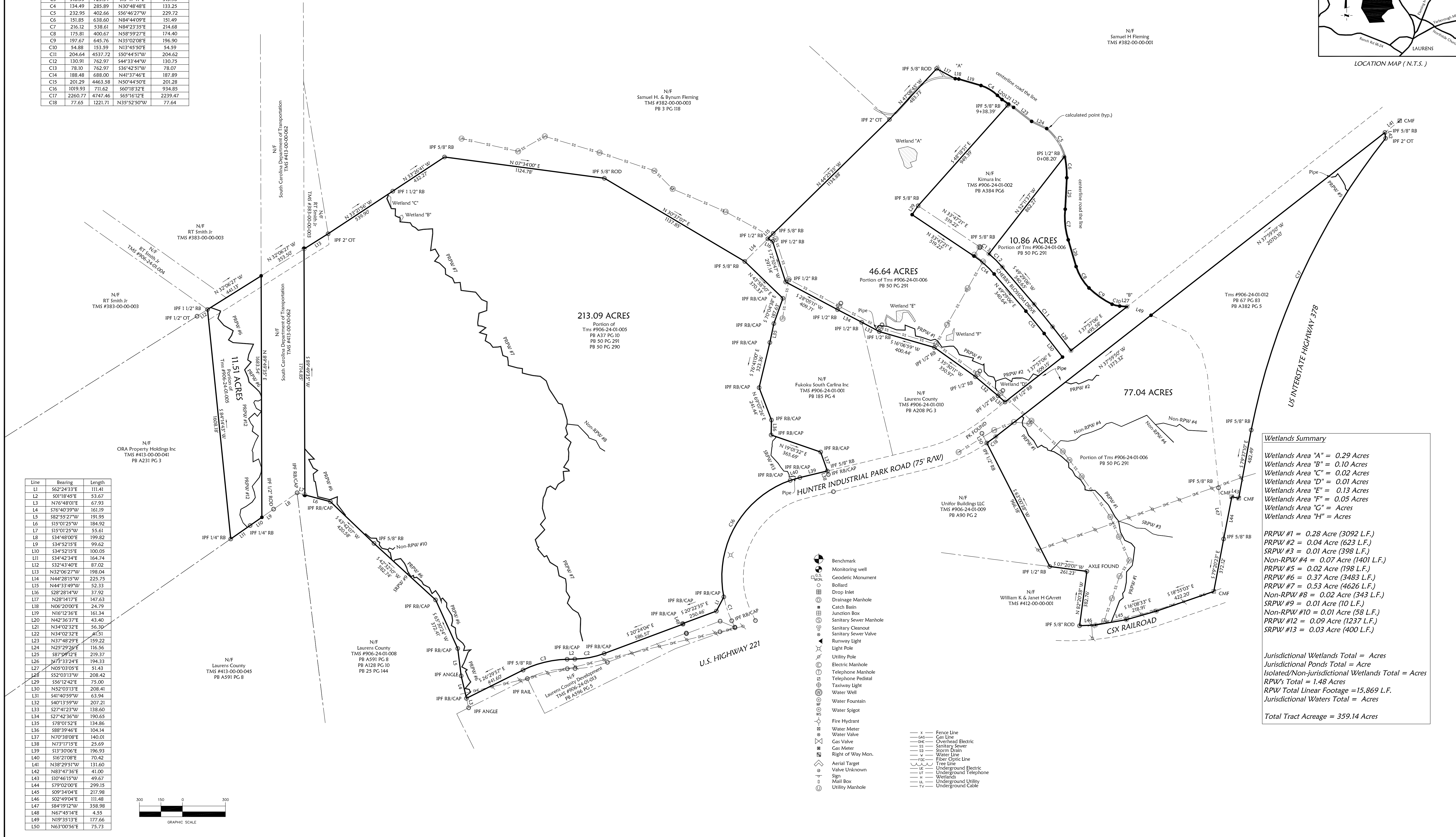


Curve	Length	Radius	Chord Bearing	Chord Length
C1	176.05	711.62	N71°37'27"E	175.61
C2	209.37	627.00	S10°47'52"E	208.40
C3	318.53	723.34	S13°47'47"E	315.96
C4	134.49	285.89	N30°48'48"E	133.25
C5	232.95	402.66	S56°46'27"W	229.72
C6	151.85	638.60	N84°44'09"E	151.49
C7	216.12	538.61	N84°23'35"E	214.68
C8	175.81	400.67	N88°59'27"E	174.40
C9	197.67	645.76	N35°02'08"E	196.90
C10	54.88	153.59	N13°45'50"E	54.59
C11	204.64	453.72	S50°44'51"W	204.62
C12	130.91	762.97	S44°33'44"W	130.75
C13	78.10	762.97	S36°42'51"W	78.07
C14	180.40	680.00	N41°37'46"E	187.89
C15	201.29	4463.58	N50°44'50"E	201.28
C16	1019.93	711.62	S60°18'32"E	934.85
C17	2260.77	4747.46	S65°16'12"E	2239.47
C18	77.65	1221.71	N35°52'50"W	77.64

Line	Bearing	Length
L1	S62°24'33"E	111.41
L2	S01°18'45"E	53.67
L3	N76°48'01"E	67.93
L4	S76°40'39"W	161.19
L5	S82°55'27"W	191.95
L6	S15°01'25"W	184.92
L7	S15°01'25"W	55.61
L8	S34°48'00"E	199.82
L9	S34°52'15"E	99.62
L10	S34°52'15"E	100.05
L11	S34°42'34"E	164.74
L12	S32°43'40"E	87.02
L13	N32°06'27"W	198.04
L14	N44°28'15"W	225.75
L15	N44°33'49"W	52.33
L16	S28°28'14"W	37.92
L17	N28°18'17"E	147.63
L18	N06°20'00"E	24.79
L19	N16°12'36"E	161.34
L20	N42°36'37"E	43.40
L21	N34°02'32"E	56.30
L22	N34°02'32"E	41.51
L23	N37°48'29"E	159.22
L24	N29°29'26"E	116.56
L25	S87°08'12"E	219.37
L26	N73°33'24"E	194.33
L27	N05°03'05"E	51.43
L28	S52°03'13"W	208.42
L29	S56°12'42"E	75.00
L30	N52°03'13"E	208.41
L31	S41°40'59"W	63.94
L32	S40°13'59"W	207.21
L33	S27°41'23"W	138.60
L34	S27°42'36"W	190.65
L35	S78°01'52"E	134.86
L36	S88°39'46"E	104.14
L37	N79°35'08"E	140.01
L38	N73°17'15"E	25.69
L39	S13°30'06"E	196.93
L40	S16°21'08"E	70.42
L41	N38°29'51"W	131.60
L42	N83°47'36"E	41.00
L43	S10°46'15"W	49.67
L44	S75°02'00"E	299.15
L45	S09°34'04"E	217.98
L46	S02°49'04"E	111.48
L47	S84°19'12"W	358.98
L48	N67°45'14"E	4.55
L49	N19°35'13"E	177.66
L50	N63°00'56"E	75.73



LOCATION MAP (N.T.S.)



Wetlands Summary

Wetlands Area "A" = 0.29 Acres
 Wetlands Area "B" = 0.10 Acres
 Wetlands Area "C" = 0.02 Acres
 Wetlands Area "D" = 0.01 Acres
 Wetlands Area "E" = 0.13 Acres
 Wetlands Area "F" = 0.05 Acres
 Wetlands Area "G" = Acres
 Wetlands Area "H" = Acres

RPW #1 = 0.28 Acre (3092 L.F.)
 RPW #2 = 0.04 Acre (623 L.F.)
 SRPW #3 = 0.01 Acre (398 L.F.)
 Non-RPW #4 = 0.07 Acre (1401 L.F.)
 RPW #5 = 0.37 Acre (3483 L.F.)
 RPW #7 = 0.53 Acre (4626 L.F.)
 Non-RPW #8 = 0.02 Acre (343 L.F.)
 SRPW #9 = 0.01 Acre (10 L.F.)
 Non-RPW #10 = 0.01 Acre (58 L.F.)
 RPW #12 = 0.09 Acre (1237 L.F.)
 SRPW #13 = 0.03 Acre (400 L.F.)

Jurisdictional Wetlands Total = Acres
 Jurisdictional Ponds Total = Acre
 Isolated/Non-jurisdictional Wetlands Total = Acres
 RPW's Total = 1.48 Acres
 RPW's Total Linear Footage = 15,869 L.F.
 Jurisdictional Waters Total = Acres

Total Tract Acreage = 359.14 Acres

- Benchmark
- Monitoring well
- Geodetic Monument
- Borehole
- Drop Inlet
- Drainage Manhole
- Catch Basin
- Junction Box
- Sanitary Sewer Manhole
- Sanitary Cleanout
- Sanitary Sewer Valve
- Runway Light
- Light Pole
- Utility Pole
- Electric Manhole
- Telephone Manhole
- Telephone Pedestal
- Taxway Light
- Water Well
- Fiber Optic Line
- Tree Line
- Underground Electric
- Valve Unknown
- Sign
- Mail Box
- Utility Manhole

- x — Fence Line
- oo — Gas Line
- oo — Overhead Electric
- ss — Sanitary Sewer
- ss — Storm Drain
- w — Water Line
- rd — Right of Way Mon.
- tr — Tree Line
- ut — Underground Electric
- ut — Underground Telephone
- h — Sign
- m — Mail Box
- tv — Underground Cable

I hereby state that to the best of my knowledge, information and belief, the survey shown herein was made in accordance with the requirements of The Minimum Standards Manual for The Practice of Land Surveying in South Carolina, and meets or exceeds the requirements for a Preliminary Survey as specified therein; also there are no visible encroachments or projections other than those shown.

PRELIMINARY

RUSSELL S. OWENS
 S.C. Registered Land Surveyor no. 19404

PROJECT MANAGER RSO	DRAWING SCALE 1" = 300'
DRAWN BY MHD	PROJECT DATE 07/21/10
FIELD WORK BY J.G.C.G.C.P.	PROJECT NUMBER 10125
FILE NAME 10125.DWG	

SURVEY ONE, LLC
 601 NORTHWOOD ROAD, SUITE C
 LEXINGTON, SOUTH CAROLINA 29072
 PHONE (803) 808-2300 CELL (803)413-9847
 SURVEYONE@WINDSTREAM.NET

DESCRIPTION	NUMBER
FIELD BOOK	FB 155
COGO FILE	10125.CRS
REVISION	
REVISION	



PREPARED FOR
ALLIANCE CONSULTING ENGINEERS
 LAURENS COUNTY, SOUTH CAROLINA

WETLANDS EXHIBIT