



### Property/Location

Site Name: Colonel's Pointe Industrial Park  
Community: Richburg  
County: Chester

### Physical Characteristics

Lease: No  
Size: 109 acres/33 hectares  
Total Certified Acres:  
Subdividable: Yes, by 10 acres  
Price Per Acre: \$30,000  
Price Range: \$30,000  
Soil Type: Sandy Clay  
Elevation Range: 570 to 580 feet

### Transportation Access

Interstate(s): I-77: 1 miles/6km; I-20: 46miles/74km  
Commercial Airport: Charlotte-Douglas International: 37 miles/60km  
Private Airport: Lancaster County: McWhirter Field: 10 miles/16 km  
Rail: No  
Container Port: Charleston: 166 miles/266 km



### Community Information

Subject Property Inside City Limits: No  
School District: Chester  
Tax District: District 1  
Community Development Status: Least Developed  
Foreign Trade Zone: No  
Multicounty Industrial Park: Yes  
Related Counties: Cherokee  
Tax Map ID: 125-00-00-010-000  
Zoned Industrial: Yes  
Zoning or Regulations: ID-2  
Current Landuse(s): Industrial  
Surrounding Landuse(s): Industrial & Commercial

Adjacent Property Available: No

### Contact

Chester County Office of Economic Development  
525 College Place, Suite A  
Chester, SC 29706  
803.377.1216  
ChooseChester.com

Water Service Provider: Chester Metro. District  
Water Main Diameter: 24 inch/61 cm  
Distance to Water Line: 0.4 miles/0.6 km  
Comments: Water line along SC 9

Sewer Service Provider: Chester Metro. District  
Sewer Main Diameter: 8 inch/20.3 cm  
Sewer Type (Force or Gravity): Gravity  
Distance to Sewer Line: 0.4 miles/0.6 km  
Comments: Sewer line along SC 9

Natural Gas Provider: Chester Co. Natural Gas  
Natural Gas Line Diameter: 8 inch/20.3 cm  
Natural Gas Proximity:  
Comments:

Primary Electricity Provider: Duke Energy  
Alt. Energy Provider  
Comments:

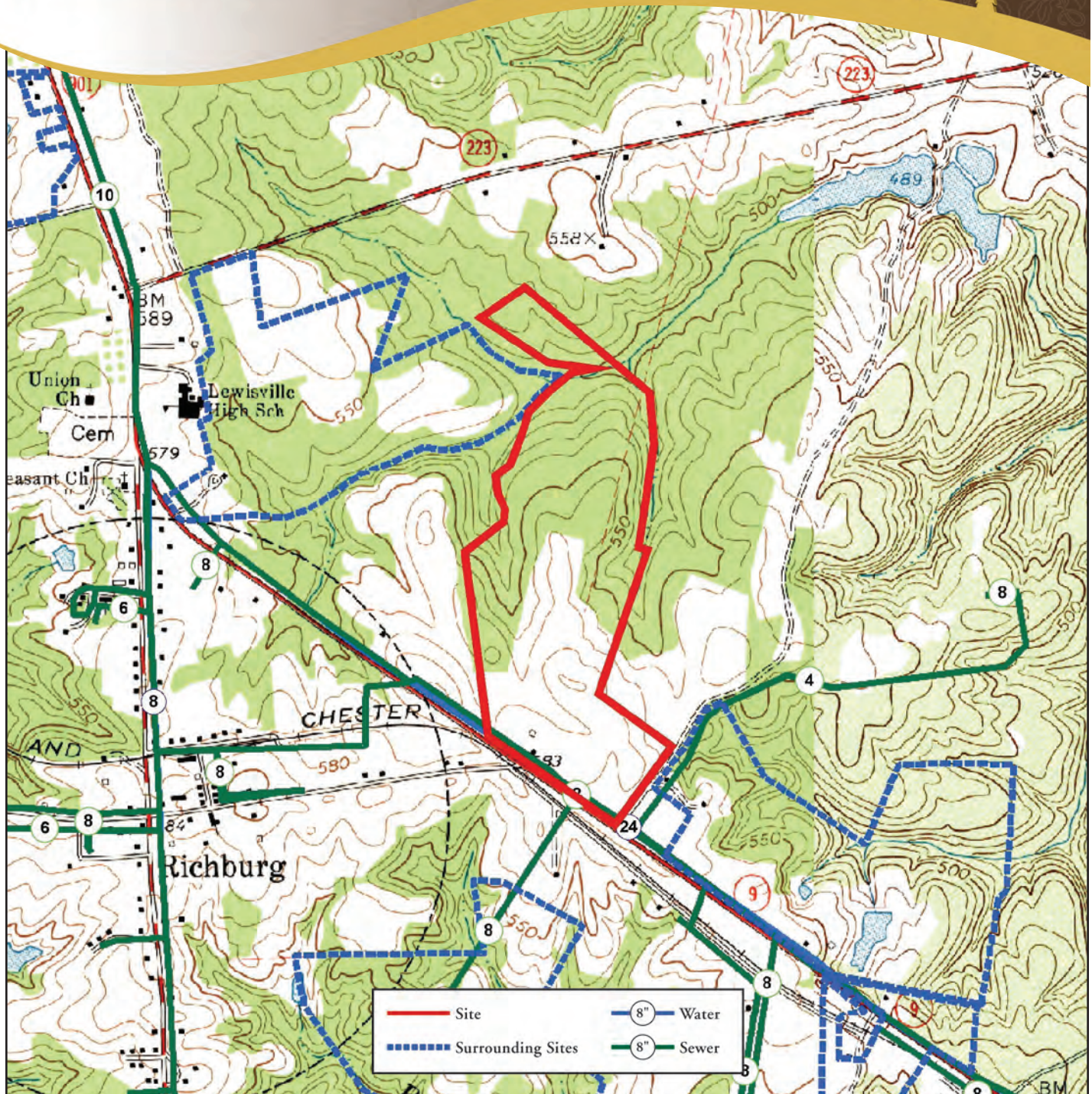
Telecom Provider: Tru Vista Telecomm.  
Fiber Optics Provider: Tru Vista Telecomm.  
Cable Provider: Tru Vista Telecomm.

Fire Department: Richburg  
Distance to Fire Dept.: 0.9 miles/1.5 km  
Fire Dept. ISO Rating: 7

This is a product of the Office of Economic Development for Chester County. The information is derived from various sources and this department does not guarantee its accuracy nor make any representations concerning the suitability of the property for your purpose.



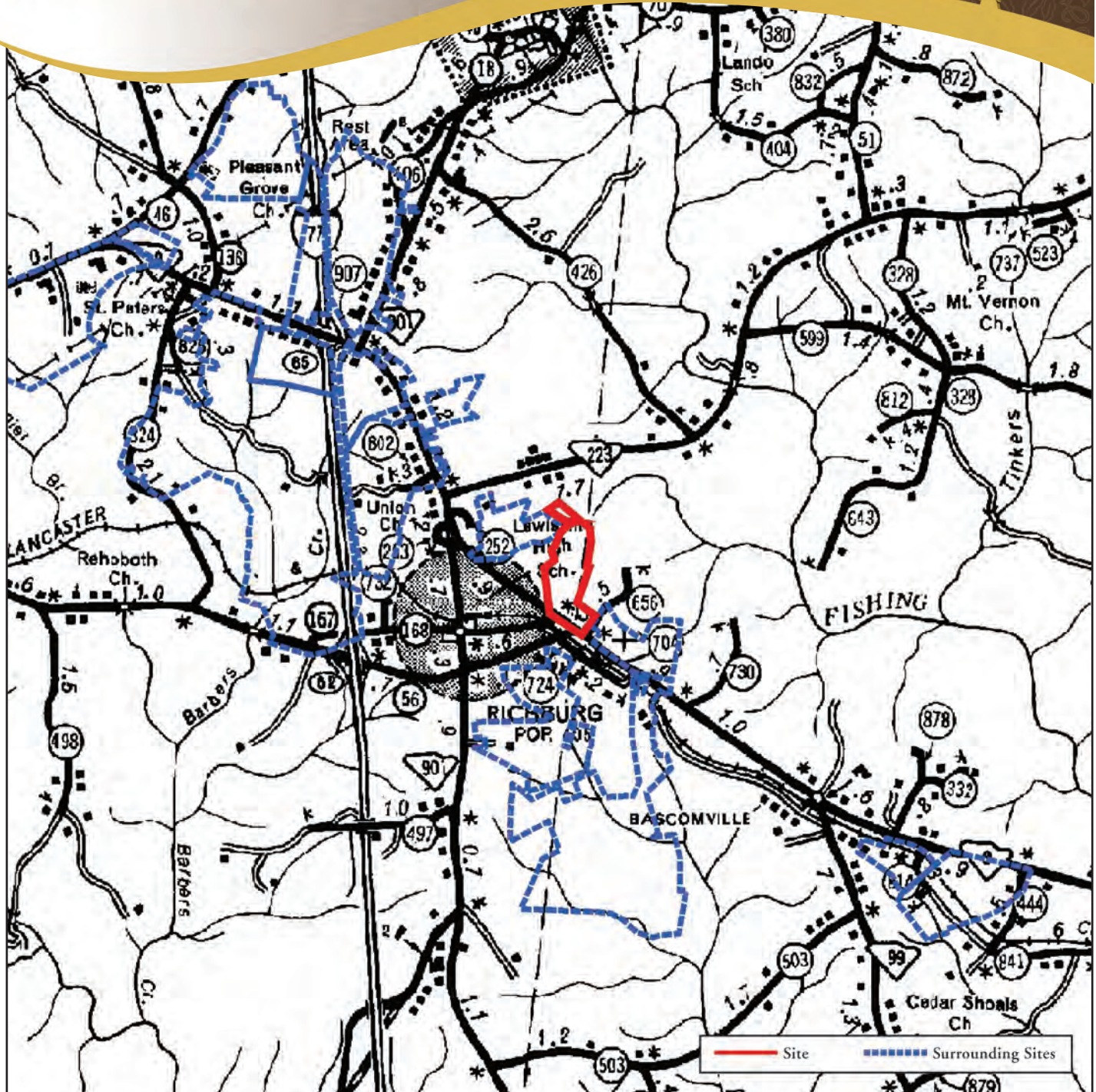




## Utilities and Services



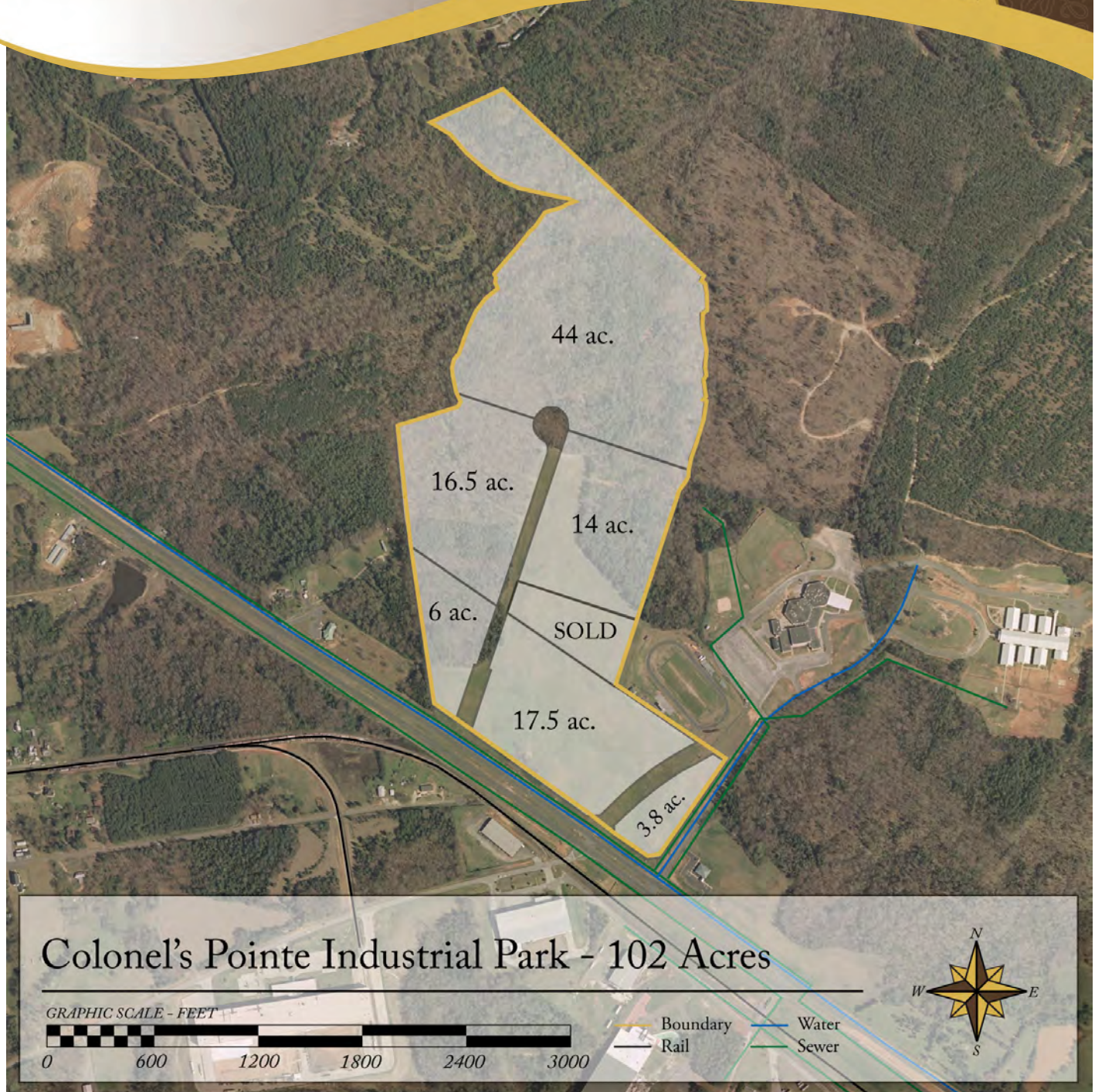




Transportation Map and Surrounding Sites







### Aerial View

