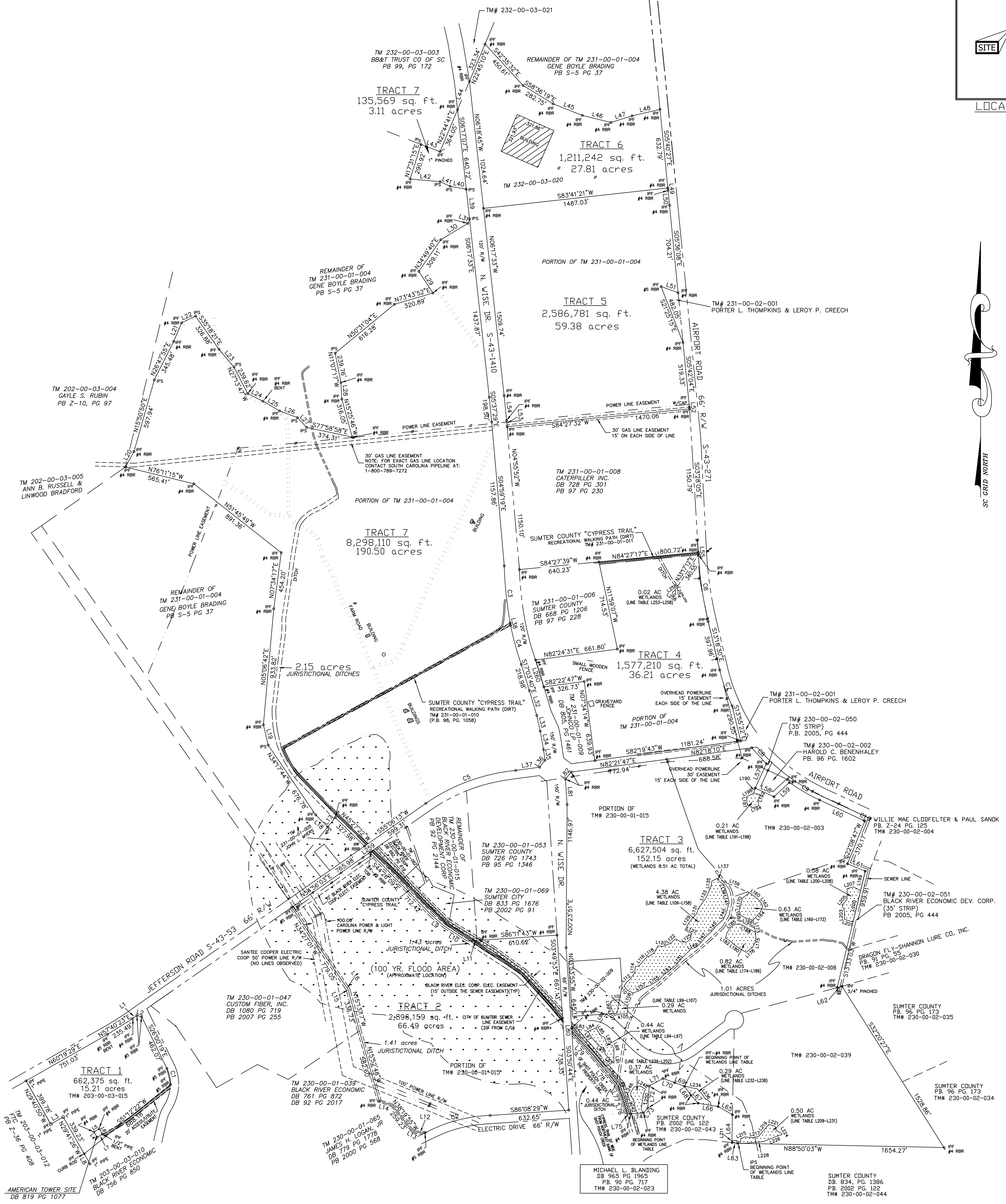




LOCATION MAP



LINE	LENGTH	BEARING
L1	45.32	N55°07'02"E
L2	39.03	S25°36'47"E
L3	114.99	S60°19'21"W
L4	50.00	N30°36'11"W
L5	50.00	N59°23'10"E
L6	50.00	S32°02'59"E
L7	50.00	S59°23'18"W
L8	93.37	S29°42'35"E
L9	135.39	S50°03'20"E
L10	216.00	S20°01'12"E
L11	109.75	S86°11'43"W
L12	81.54	N85°36'50"W
L13	24.90	N59°20'03"W
L14	108.02	N71°40'19"E
L15	12.22	N20°11'13"W
L16	16.32	N33°14'48"W
L17	97.22	S38°52'58"W
L18	135.21	N44°50'24"W
L19	166.85	N13°19'17"W
L20	140.58	N29°03'00"E
L21	161.61	N22°51'43"E
L22	123.62	N64°11'13"E
L23	185.61	S40°12'13"E
L24	136.91	S63°42'39"E
L25	154.40	S59°43'41"E
L26	123.95	N58°24'48"E
L27	107.56	S41°10'50"E
L28	133.09	N03°04'15"W
L29	207.37	N32°57'13"W
L30	250.95	N58°52'15"E
L31	36.40	N21°44'19"E
L32	208.44	S16°40'25"E
L33	129.02	S12°32'17"E
L34	150.13	S10°04'59"E
L35	185.00	S22°28'59"E
L36	70.71	S37°26'01"W
L37	193.16	S82°24'06"W
L38	20.88	S10°37'51"E
L39	230.21	N02°24'18"W
L40	131.96	N29°23'35"W
L41	87.64	N85°07'56"W
L42	241.87	N85°02'07"W
L43	162.51	S68°52'24"E
L44	247.58	N22°42'29"E
L45	251.81	S68°26'19"E
L46	236.02	S76°11'09"E
L47	173.60	N22°39'01"E
L48	229.99	N77°02'05"E
L49	19.24	S05°23'17"E
L50	120.01	S05°37'03"E
L51	145.61	N69°53'50"W
L52	15.92	S04°41'32"E
L53	49.95	N04°54'24"W
L54	199.89	N05°37'37"W
L55	189.97	S01°48'52"E
L56	216.41	S24°55'44"W
L57	165.54	S65°11'02"E
L58	168.48	N47°19'08"E
L59	391.16	S65°07'06"E
L60	159.41	N02°24'18"W
L61	39.87	N74°59'32"E
L62	47.70	N83°27'40"W
L63	224.19	N01°12'20"E
L64	131.62	N02°24'18"W
L65	162.15	N80°25'35"W

LINE	LENGTH	BEARING
L66	86.72	N42°23'54"W
L67	99.45	N70°22'43"W
L68	126.74	S61°28'47"W
L69	177.57	S03°12'26"W
L70	52.18	S54°32'03"E
L71	102.00	S85°40'07"W
L72	39.12	S83°37'39"W
L73	145.97	N133°29'26"E
L74	82.46	N20°28'11"W
L75	284.18	N38°53'28"W
L76	268.26	N41°26'10"W
L77	44.78	N03°42'47"W
L78	204.26	N03°49'11"W
L79	73.08	N39°19'40"E
L80	133.92	S78°23'35"E
L81	67.96	N07°47'10"E
L82	72.02	S33°34'01"E
L83	33.14	S65°36'03"E
L84	47.98	S10°09'26"E
L85	55.51	S63°40'24"W
L86	30.82	S19°40'45"E
L87	50.14	S01°47'04"W
L88	54.61	S01°53'17"E
L89	66.82	N03°42'47"W
L90	46.18	N46°17'12"E
L91	44.78	N07°22'41"W
L92	49.44	N60°13'29"W
L93	66.82	N43°23'35"W
L94	46.70	N49°22'02"E
L95	204.83	N37°16'01"E
L96	47.49	N07°27'18"W
L97	27.09	N58°28'11"E
L98	49.57	N82°50'27"E
L99	80.40	S51°11'01"E
L100	41.44	S04°18'18"E
L101	20.39	S08°21'41"W
L102	61.88	S87°17'11"W
L103	42.21	S76°41'47"W
L104	65.39	N23°35'23"W
L105	114.71	N23°57'34"E
L106	49.61	N82°20'27"E
L107	110.43	N41°22'24"W
L108	41.37	N33°11'16"E
L109	27.69	N51°47'22"E
L110	15.76	N82°47'55"E
L111	52.17	N07°19'31"E
L112	32.01	N74°35'36"E
L113	95.47	N41°09'13"E
L114	66.16	N82°20'27"E
L115	48.83	N84°22'43"E
L116	66.29	N30°46'30"E
L117	40.45	S83°47'32"E
L118	66.16	N67°10'56"E
L119	50.92	N49°22'02"E
L120	49.49	S61°06'54"E
L121	44.23	S84°09'47"E
L122	42.18	N54°05'04"E
L123	49.49	N82°47'55"E
L124	55.39	N63°43'18"W
L125	50.91	N26°10'35"E
L126	42.31	N33°34'52"E
L127	67.96	N45°02'53"W
L128	47.14	N18°21'16"E

LINE	LENGTH	BEARING
L129	96.53	N50°17'43"E
L130	31.94	N60°15'56"E
L131	77.69	N23°20'28"E
L132	41.50	N08°13'45"E
L133	58.46	N63°54'41"E
L134	20.95	S34°13'35"E
L135	52.18	S54°32'03"E
L136	57.20	S19°10'41"E
L137	36.40	S18°24'21"E
L138	58.46	N63°54'41"E
L139	80.69	S15°45'21"W
L140	64.49	S24°22'25"W
L141	81.08	S47°33'36"W
L142	44.78	S02°42'47"W
L143	67.96	S47°33'36"W
L144	47.16	S71°02'07"W
L145	109.97	S44°34'09"W
L146	53.19	S39°35'52"W
L147	86.35	S47°30'17"W
L148	60.28	S45°25'56"W
L149	42.80	S48°58'47"E
L150	46.70	S02°02'17"E
L151	54.15	S41°19'18"W
L152	81.12	S88°57'16"W
L153	54.40	S60°24'06"W
L154	45.92	S88°17'14"W
L155	284.31	S66°11'47"E
L156	60.37	S54°56'05"E
L157	79.80	S48°58'47"E
L158	46.70	S02°02'17"E
L159	54.17	S21°12'50"W
L160	33.02	S42°05'27"W
L161	52.38	S42°34'30"W
L162	41.24	S02°02'17"E
L163	17.09	N16°01'36"E
L164	67.62	N53°25'28"E
L165	101.89	S10°41'43"E
L166	39.72	S49°45'39"E
L167	48.12	S09°11'06"W
L168	44.82	S27°28'46"W
L169	42.29	N16°37'02"E
L170	61.88	S87°17'11"W
L171	47.16	S71°02'07"W
L172	50.39	N61°26'17"W
L173	67.39	N54°49'59"W
L174	42.14	N47°28'32"W
L175	44.87	N82°20'27"E
L176	45.16	N18°46'43"E
L177	44.22	N32°50'49"E
L178	48.01	N52°32'18"E
L179	38.90	N67°20'41"E
L180	35.74	S02°02'17"E
L181	52.07	S60°16'04"E
L182	55.51	S64°03'05"E
L183	41.04	S18°10'19"W
L184	44.87	S49°45'39"E
L185	46.89	S21°00'12"W
L186	46.47	S07°07'46"E
L187	55.71	S71°22'41"W
L188	25.70	N45°02'53"W
L189	21.48	N22°21'13"W

LINE	LENGTH	BEARING
L190	68.02	N61°17'02"E
L191	160.89	S13°33'03"W
L192	288.34	S13°33'03"W
L193	58.46	N72°14'18"W
L194	88.69	N02°02'53"E
L195	52.90	N76°45'34"E
L196	63.53	S61°36'49"E
L197	13.56	N83°27'40"W
L198	88.69	N02°02'53"E
L199	52.90	N76°45'34"E
L200	63.53	S61°36'49"E
L201	81.61	N41°11'04"E
L202	54.80	N72°55'25"W
L203	13.88	N71°13'35"E
L204	66.02	N00°44'38"E
L205	50.13	S85°45'49"W
L206	61.61	N41°11'04"E
L207	54.80	N72°55'25"W
L208	13.88	N71°13'35"E
L209	66.02	N00°44'38"E
L210	50.13	S85°45'49"W
L211	42.89	S69°30'26"E
L212	28.45	N02°14'53"E
L213	32.69	N65°32'19"E
L214	63.39	S84°58'29"E
L215	48.42	N80°19'27"E
L216	43.75	S28°23'52"E
L217	43.75	S28°23'52"E
L218	85.25	S68°48'27"W
L219	37.02	S68°13'17"E
L220	13.18	S30°12'19"E
L221	54.54	S71°16'20"W
L222	85.25	S68°48'27"W
L223	37.02	S68°13'17"E
L224	13.18	S30°12'19"E
L225	54.54	S71°16'20"W
L226	85.25	S68°48'27"W
L227	37.02	S68°13'17"E
L228	13.18	S30°12'19"E
L229	43.03	S83°42'04"W
L230	57.32	S89°05'04"W
L231	43.03	S83°42'04"W
L232	20.22	S82°02'22"E
L233	54.56	S76°05'11"E
L234	27.59	S83°25'48"W
L235	51.72	N82°23'52"W
L236	45.12	S34°13'53"E
L237	50.89	S65°41'48"E
L238	28.03	S13°28'28"E
L239	41.88	N12°08'30"W
L240	44.09	S85°40'07"W
L241	26.92	N43°34'46"W
L242	33.40	N45°49'44"W
L243	51.88	N12°08'30"W
L244	39.28	N33°41'02"W
L245	25.43	N03°59'05"W
L246	54.68	N30°17'59"E
L247	47.72	N82°23'52"W
L248	47.72	S82°23'52"E
L249	46.64	S20°38'51"W
L250	46.64	S20°38'51"W
L251	71.52	S08°24'49"W
L252	43.49	S22°53'27"E
L253	9.94	S30°07'52"E
L254	17.57	S01°56'17"E
L255	23.13	S29°49'28"W
L256	25.77	N04°55'36"W
L257	25.77	N04°55'36"W
L258	23.61	N67°00'47"W
L259	13.78	N33°43'28"E
L260	225.29	N17°03'40"W

CURVE	LENGTH	RADIUS	CHORD	BEARING
C1	131.74	286.80	130.59	S12°51'15"E
C2	545.80	1166.16	540.83	S74°55'04"W
C3	460.47	3012.25	460.02	S05°58'22"E
C4	323.80	2141.13	323.49	S15°14'34"E
C5	776.39	1525.97	768.04	S69°51'33"W
C6	541.89	3105.04	541.20	S08°22'04"E
C7	304.97	1572.26	304.47	S19°03'25"E
C8	173.38	1559.09	173.29	S42°50'28"E
C9	280.96	1594.09	280.60	S59°55'17"E
C10	8.66	889.86	8.66	S64°49'26"E

CYPRESS TRAIL 20' WIDE

SUMTER TOWNSHIP
SUMTER COUNTY
SOUTH CAROLINA

PLAT

OF 7 TRACTS LOCATED IN SUMTER TOWNSHIP, SUMTER COUNTY, SOUTH CAROLINA, BEING THAT PROPERTY DESIGNATED AS THE BLACK RIVER INDUSTRIAL SITE. SURVEYED FOR:

COUNTY OF SUMTER

I HEREBY STATE TO THE BEST OF MY KNOWLEDGE, INFORMATION AND BELIEF, THE SURVEY SHOWN HEREON WAS MADE IN ACCORDANCE WITH THE REQUIREMENTS OF THE MINIMUM STANDARDS MANUAL FOR THE PRACTICE OF LAND SURVEYING IN SOUTH CAROLINA, AND MEETS OR EXCEEDS THE REQUIREMENTS FOR A CLASS "A" SURVEY AS SPECIFIED THEREIN, ALSO THERE ARE NO ENCROACHMENTS, PROJECTIONS, OR SETBACKS AFFECTING THE PROPERTY OTHER THAN THOSE SHOWN, ALSO I HAVE CONSULTED THE FEDERAL INSURANCE ADMINISTRATION FLOOD HAZARD MAP 45085C0301D & 45085C0303D, EFFECTIVE DATE FEB 16, 2002, AND FOUND A PORTION OF THE SUBJECT PROPERTY TO BE IN A FLOOD ZONE. NOTE: THIS PROPERTY IS SUBJECT OF ANY AND ALL RIGHTS-OF-WAY, EASEMENTS, COVENANTS AND RESTRICTIONS, RECORDED OR UNRECORDED, THAT MAY APPLY, UNLESS NOTED HEREON THIS MAP DOES NOT ADDRESS ENVIRONMENTAL CONCERNS OR SUBSURFACE INVESTIGATION.

NESSBITT SURVEYING CO., INC.
4340 ALLIGATOR ROAD
U.S. HIGHWAY 76 & ALLIGATOR ROAD
TIMMONSVILLE, S.C. 29161
PHONE (843) 346-3302
FAX (843) 346-5802
email davidn@nessbittsurveying.com

DAVID A. NESSBITT RLS NO 7823

DATE: JUNE 16, 2008
JOB NO: 06376TOTAL
FLD BK: 259
PAGE: 23
REF JOB#:
TAX MAP #:
SCALE 1" = 400 FT
GRAPHIC SCALE