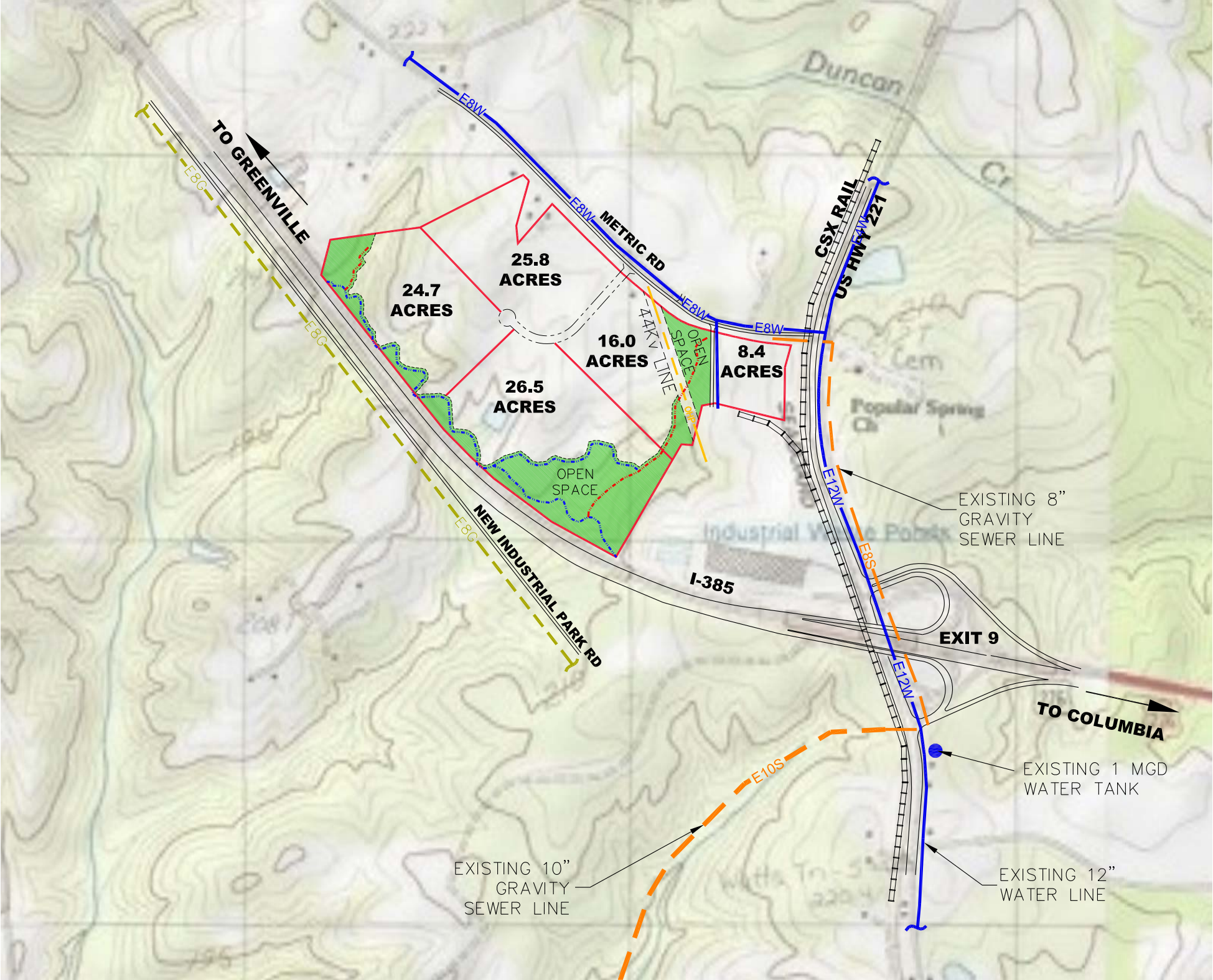
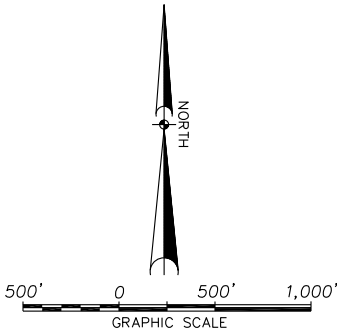


NOTES:

- 1. NO FIELD BOUNDARY AND/OR TOPOGRAPHIC SURVEY HAVE BEEN COMPLETED FOR THIS SITE.
- 2. NO ENVIRONMENTAL DUE DILIGENCE HAS BEEN COMPLETED FOR THIS SITE. THIS WILL NEED TO BE COMPLETED PRIOR TO DESIGN AND/OR CONSTRUCTION ON-SITE.
- 3. LAYOUT SHOWN IS PRELIMINARY AND IS BASED UPON USGS CONTOURS, AERIAL, NWI AND SOILS MAPPING.
- 4. LOCATIONS OF EXISTING WATER AND SEWER INFRASTRUCTURE SHOWN BASED ON DATA RECEIVED FROM LAURENS COUNTY WATER & SEWER COMMISSION (LCWSC). THESE HAVE NOT BEEN FIELD VERIFIED.
- 5. STREAMS APPROXIMATED BY ECS, INC.

LEGEND

- SITE BOUNDARY
- FUTURE ROADWAY
- WATERLINE E12W
- SEWER LINE E10S
- GAS LINE E6G
- POWER OHP
- STREAMS
- DRY STREAM BED
- OPEN SPACE



TOTAL PARK ACREAGE = 138 AC.

LAURENS COUNTY DEVELOPMENT CORPORATION

PIEDMONT INDUSTRIAL SITE

DATE: MAY 2010

SCALE: 1"=1,000'

JOB #: 09286

SHEET 1 OF 1

